

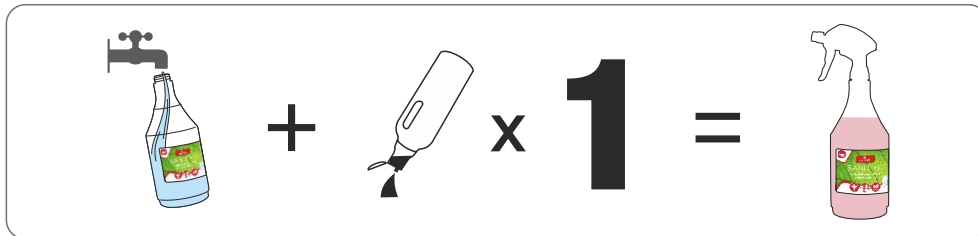


SANIT +C

Ecological concentrated washroom cleaner

Removes soiling and water scale from water washable hard surfaces, including stainless steel, porcelain, ceramic, glass and plastic.

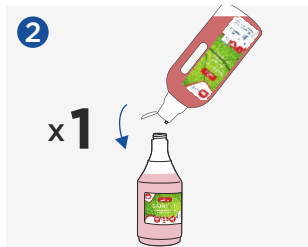
DILUTION RATE (General Cleaning)



METHOD OF USE



1 Fill an empty trigger bottle with clean water.



2 Add 1 shot (20ml) of GREEN'R Sanit +C.



3 Spray diluted GREEN'r Sanit +C onto the area to be cleaned and work into the surface with a cloth.



4 Wipe away with a clean cloth. Leave the surface to air dry.

NB. DO NOT USE on acid sensitive surfaces such as marble.

DOSAGE

APPLICATION	DILUTION
LIGHT CLEANING	9ml (1:66)
GENERAL CLEANING	20ml (1:30)
HEAVY CLEANING	30ml (1:20)
BUCKET FILL	40ml (1:125)

PRODUCT INFO



Pack Size: 1L, 5L
 Odour: Sweet
 Colour: Red
 pH (undiluted): 2.1
 Shelf life: 2 years

SKU:

CLOECO5071L 1L
CLOECO507 5L

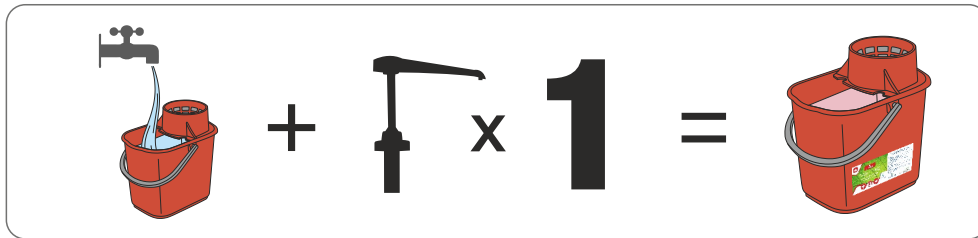


SANIT +C

Ecological concentrated washroom cleaner

Removes soiling and water scale from water washable hard surfaces, including stainless steel, porcelain, ceramic, glass and plastic.

DILUTION RATE (Heavy Cleaning)



METHOD OF USE



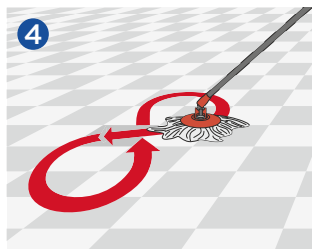
1 Fill an empty trigger bottle with clean water.



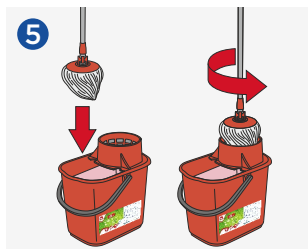
2 Dispense 1 pump (30ml) of GREEN'R Sanit +C into a bucket.



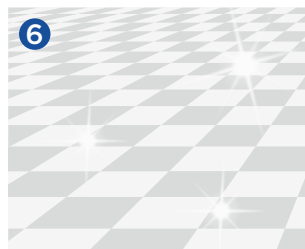
3 Immerse the clean mop head into the bucket of GREEN'R Sanit +C solution and wring out the mop thoroughly.



4 Apply the mop to the floor and wipe in a figure of 8 motion, working the mop side to side.



5 Clean the dirty mop head in the bucket and repeat the previous steps until the floor is clean.



6 Allow to air dry for a streak-free finish.

NB. DO NOT USE on acid sensitive surfaces such as marble.

DOSAGE

APPLICATION	DILUTION
LIGHT CLEANING	9ml (1:66)
GENERAL CLEANING	20ml (1:30)
HEAVY CLEANING	30ml (1:20)
BUCKET FILL	40ml (1:125)

PRODUCT INFO



Pack Size: 1L, 5L
 Odour: Sweet
 Colour: Red
 pH (undiluted): 2.1
 Shelf life: 2 years

SKU:

CLOECO5071L 1L
CLOECO507 5L



WASHROOM
CLEANING

SANIT +C

WASHROOM CLEANER



- ECOLOGICAL WASHROOM CLEANER
- CONCENTRATED - ECONOMICAL IN USE
- CLEANS HARD SURFACES
- VEGAN APPROVED
- EU ECOLABEL: IE/020/002

PRODUCT DESCRIPTION

Removes soiling and water scale from water washable hard surfaces*, including stainless steel, porcelain, ceramic, glass and plastic. This is a concentrated product, apply sparingly and evenly. Proper dosage saves costs and minimises environmental impact.

- Reduced impact on aquatic life
- Reduced use of hazardous substances
- Not tested on animals
- Phosphate free
- Suitable for use in septic tanks
- Rapidly biodegradable
- Clear user instructions
- Reduced packaging waste

DILUTION RATES

Light Cleaning - Dilute 9mls (1:66) of GREEN'R Sanit +C in a 600ml trigger spray with cold water.

General Cleaning - Dilute 20mls (1:30) of GREEN'R Sanit +C in a 600ml trigger spray with cold water.

Heavy Dirt - Dilute 30mls (1:20) of GREEN'R Sanit +C in a 600ml trigger spray with cold water.

Bucket Fill - Dilute 40mls (1:125) of GREEN'R Sanit +C in a 5 Litre bucket with cold water.

INSTRUCTIONS FOR USE

For the best ecological and economical usage.

Apply a dilution of GREEN'R Sanit +C evenly onto the surface using a trigger spray. With a clean cloth, sponge, pad or mop, work over the surface to remove the soiling. Use a bucket of clean cold water to rinse out the cloth, sponge, pad or mop. Rinse with cold water if necessary.

***NB. DO NOT USE ON ACID SENSITIVE SURFACES EG. MARBLE.**

ADDITIONAL INFORMATION

pH Level: 2-4

SKU:

CLOECO5071L 1L

CLOECO507 5L